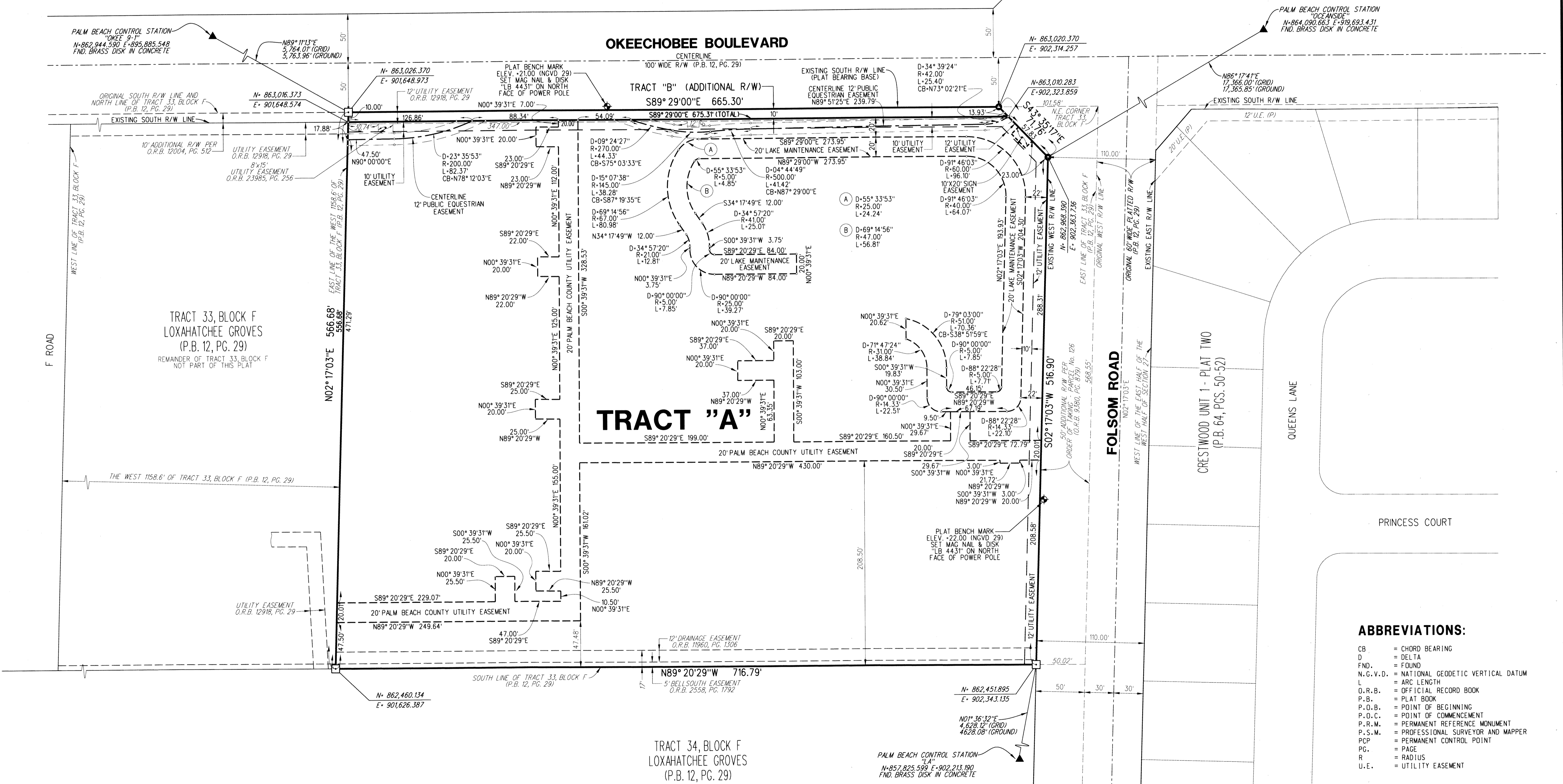
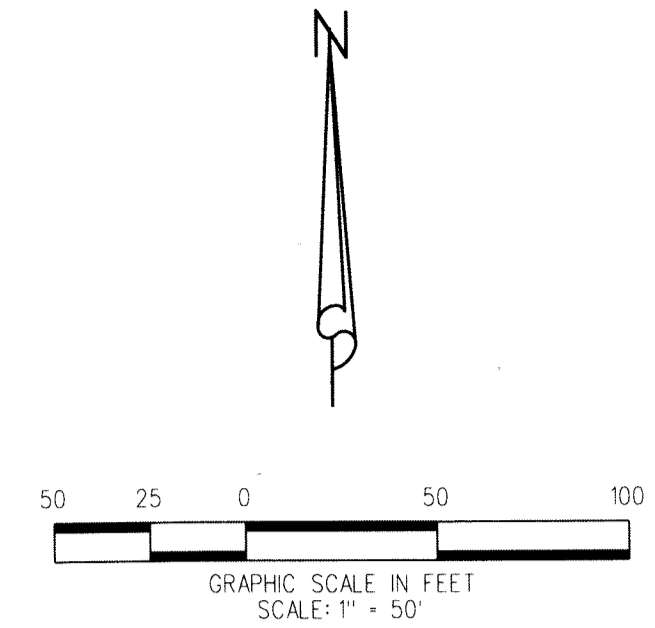


OKEECHOBEE FOLSOM COMMERCIAL

BEING A REPLAT OF A PORTION OF TRACT 33, BLOCK "F", AS SHOWN ON LOXAHATCHEE GROVES, RECORDED IN PLAT BOOK 12, PAGE 29, PUBLIC RECORDS OF PALM BEACH COUNTY, FLORIDA LYING IN SECTION 27, TOWNSHIP 43 SOUTH, RANGE 41 EAST TOWN OF LOXAHATCHEE GROVES, PALM BEACH COUNTY, FLORIDA

OCTOBER 2016 SHEET 2 OF 2



- LEGEND:**
- ☐ = SET 4"x4" CONCRETE MONUMENT WITH DISK - STAMPED "PRM LB 4431" PERMANENT REFERENCE MONUMENT (P.R.M.), UNLESS OTHERWISE NOTED.
 - = SET 5/8" IRON ROD & METAL CAP - STAMPED "PRM LB 4431" - PERMANENT REFERENCE MONUMENT (P.R.M.), UNLESS OTHERWISE NOTED.
 - ⊙ = SET MAG NAIL & DISK - STAMPED "PRM LB 4431" - PERMANENT REFERENCE MONUMENT (P.R.M.), UNLESS OTHERWISE NOTED.

AREA TABULATION

DESCRIPTION	SQUARE FEET	ACREAGE
TRACT "A"	398,632	9.15
TRACT "B"	6,703	0.15
TOTAL	405,335	9.30

LIDBERG LAND SURVEYING, INC.

LB4431 675 West Indiantown Road, Suite 200, Jupiter, Florida 33458 TEL. 561-746-8454

- ABBREVIATIONS:**
- CB = CHORD BEARING
 - D = DELTA
 - FND. = FOUND
 - N.G.V.D. = NATIONAL GEODETIC VERTICAL DATUM
 - L = ARC LENGTH
 - O.R.B. = OFFICIAL RECORD BOOK
 - P.B. = PLAT BOOK
 - P.O.B. = POINT OF BEGINNING
 - P.O.C. = POINT OF COMMENCEMENT
 - P.R.M. = PERMANENT REFERENCE MONUMENT
 - P.S.M. = PROFESSIONAL SURVEYOR AND MAPPER
 - PCP = PERMANENT CONTROL POINT
 - PG. = PAGE
 - R = RADIUS
 - U.E. = UTILITY EASEMENT

CAD.	K:\UST \ 274341 \ 12-29 \ 08-088-306 \ 08-088-306.DGN		
FLD.			
REF.			
OFF.	CASASUS		JOB 08-088-306 DATE OCTOBER 2016
CKD.	D.C.L.	SHEET 2 OF 2	DWG. 008-088P